



Lockside House, Chelsea Creek
Fulham SW6

GARTONJONES.COM



Lockside House, Chelsea Creek Fulham, SW6

GARTON JONES.COM

13 Park Street
Chelsea Creek
London
SW6 2FS

Sales +44 (0) 20 7824 7090
paul@gartonjones.com
www.gartonjones.com

£650,000 Leasehold

A rare opportunity to acquire a larger-than-average one-bedroom apartment within the highly sought-after Chelsea Creek development, built by the award-winning Berkeley St George.

Extending to 665sqft (61 sqm), this well-appointed home benefits from access to two private balconies, enhancing both space and natural light. The impressive open-plan living and dining area measures 29'1 x 11'5 (8.8m x 3.4m) and incorporates a contemporary kitchen with fully integrated appliances, creating a perfect setting for both entertaining and everyday living.

The apartment further comprises a generous double bedroom and a sleek, modern bathroom, completing a stylish and highly practical layout.

Residents enjoy access to excellent on-site amenities, including a gymnasium, swimming pool, spa and sauna, along with a 24-hour concierge service. Set within a beautiful canal-side environment, Chelsea Creek offers a unique blend of tranquillity and city living in one of West London's most desirable developments.

An outstanding opportunity for owner-occupiers and investors alike.

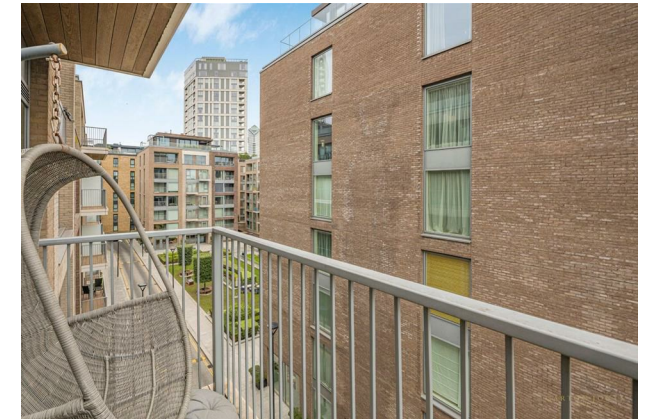
Service Charge - £5500
Ground Rent - £350
Lease 999 Years From 1st June 2010

Council Tax — London Borough Of Hammersmith & Fulham
Council Band E

EPC B (82)

EPC certificate available on request.

- One Bedroom
- 4th Floor With Lift
- 665sqft (61sqm)
- Idyllic Dockside Location
- Open Plan Lounge — Kitchen Area
- Two Balconies
- Integrated Appliances
- High Specification
- Residents Spa — Gym & Swimming Pool
- EPC B (82)

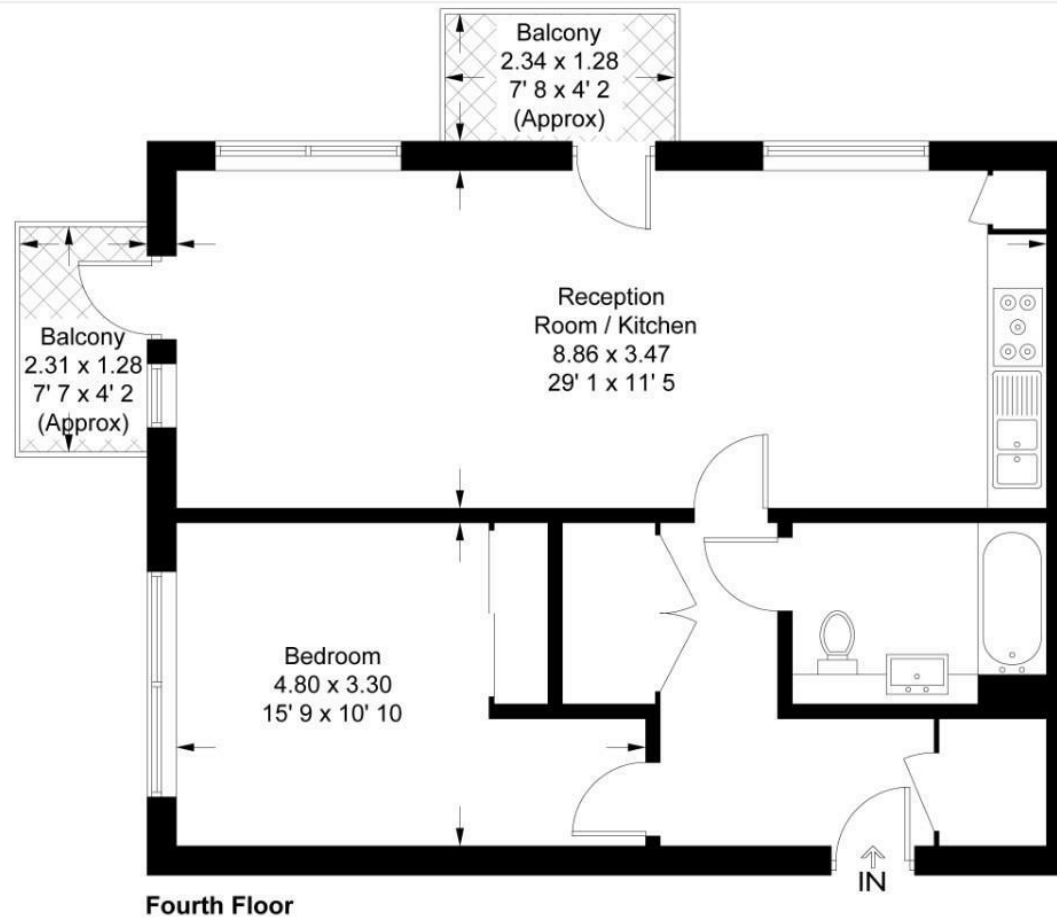


Lockside House

Approximate Gross Internal Area = 665 sq ft / 61.8 sq m

Balcony = 64 sq ft / 6 sq m

GARTON JONES
LONDON



This plan is not to scale and must be used as layout guidance only. All measurements and areas are approximate and should not be relied upon to provide accurate information. This plan must not be relied upon when making property valuations, design considerations or any other such relevant decisions. We accept no responsibility or liability (whether in contract, tort or otherwise) in relation to any loss whatsoever arising from or in connection with any use of this plan or the adequacy, accuracy or completeness of it or any information within it.



